

美标锁芯

CYLINDER

可替换锁芯为高安保锁芯, 适用于高安保公共场所
可选尺寸: 1-1/8", 1-3/8", 1-1/2", 1-5/8", 1-3/4", 1-7/8", 2"
表面处理: SS, PVD, AB

可做总钥匙管理系统, 最高6级管理

Removable core cylinders are designed to give the user the flexibility to replace the cylinder mechanism by using a control key. This will minimize expensive labor and hardware costs for high turnover situations.

L=1-3/8", 1-1/8", 1-1/2", 1-5/8", 1-3/4", 1-7/8", 2"

Finish: SS, PVD, AB

optional: master key

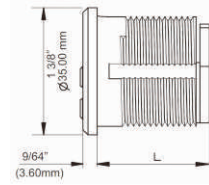
美标锁芯长度选用对照表

锁芯长度 (Inch)	适用门厚 (mm)
1-1/8"	43-52
1-2/8"	49-57
1-3/8"	56-64
1-4/8"	62-70
1-5/8"	68-76
1-6/8"	75-83
1-7/8"	81-89
2"	87-95

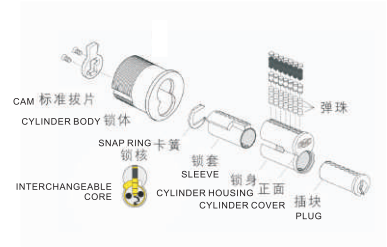
适用门厚数据标配锁芯底座L-81, 如更换底座, 数据将发生变化, 请咨询技术人员。



1-1/8"



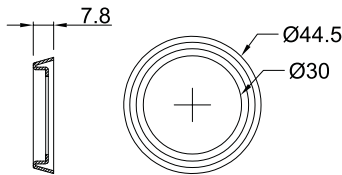
1-3/8"



美标锁芯底座 ESCUTHEON



L-81

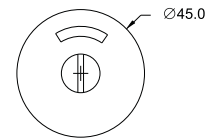


卫生间拧手 THUMBTURN



CY-03WC

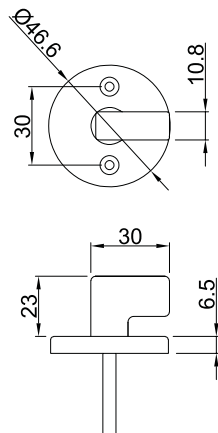
注: CY-03WC与CY-01, CY-02配合使用



美标拧手 THUMBTURN



CY-01



美标拧手 THUMBTURN



CY-02

