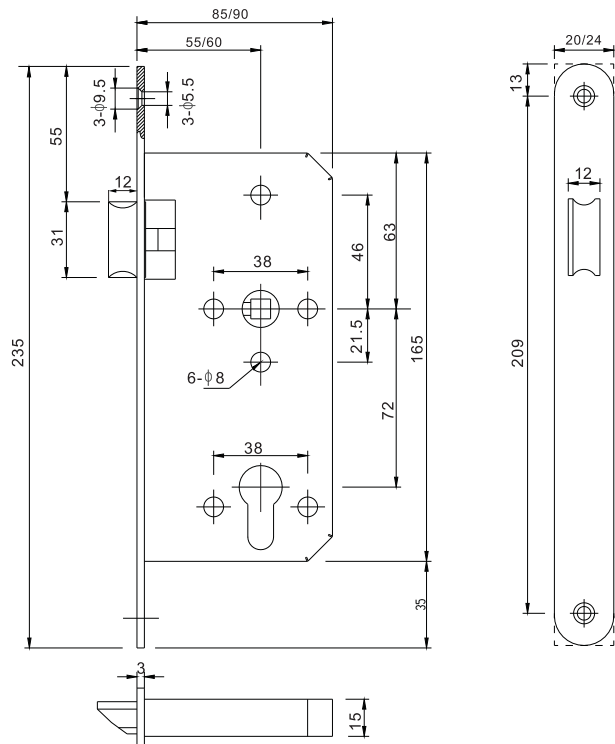


- 执行标准：欧盟EN12209:2016.20万次开启标准
EN1634-1:2012.4小时防火标准
中国GB12955-2008.90分钟3C防火标准
 - 舌头配置：SUS304精铸斜舌
 - 面板配置：高级耐指纹盖板，SUS304面板
 - 拨轮配置：高精度钢制，一体式
 - 表面处理：不锈钢拉丝，沙金PVD
 - 适用门型：木质门、钢质门、平口门等
 - 方向开启：斜舌可换向，不分左右方向
 - 适用区域：通道门、隔断门等
- Compliance: EN12209:2016, 200,000 life cycle
EN1634-1:2012, 4 hours fire rated
 - Dead bolt and latch bolt are made by casting stainless steel 304
 - Forend is anti-fingerprint stainless steel 304
 - Follower is casting stainless steel 304
 - Finish: SS, satin PVD, polished PVD, polished
 - Suitable for wooden and steel door, flat door, rebated door
 - Non handed
 - Application: fire door, smoke door

72-55L/72-60L

通道防火锁体

Fire Rated Passage Lock



标准配置方案

Standard configuration



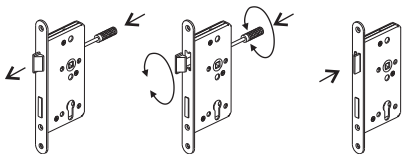
配置说明

The detail of standard configuration

- 把手配置：双面活动把手，2颗对穿螺丝
 - 锁体配置：钢木螺丝及标准100MM长8*8方杆
 - 适用标准门厚45-50MM，选配门厚51-70MM
 - 挡片配置：FA01L或FA03
- Handle: Two activity handle for both side, 4 sets of through bolt .
 - Lock: screws and 8*8*100mm spindle
 - Suitable for door thickness 45~50mm. 51~70mm thickness is optional.
 - Strike FA01L or FA03

换舌方向示意图

Reverse latch for left or right handed door .



功能说明

Function

- 通道门：门内门外均压把手开门，无锁定
- Passage door: unlocked by both sides