

72-65 PT

参数

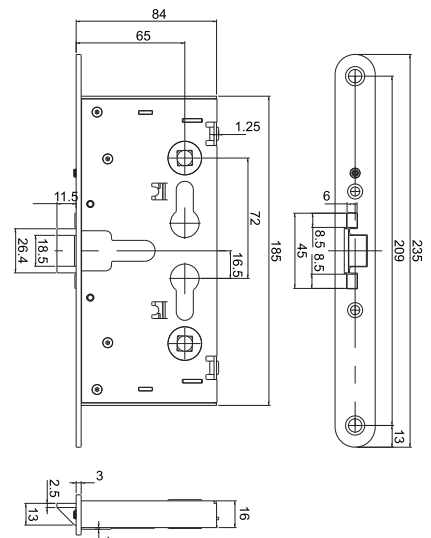
逃生功能
 钥匙开启
 方舌一段式伸出
 离合器拨轮
 不分左右门
 不配锁扣板

解锁状态

下压内、外把手盒钥匙都可以收回斜舌

上锁状态

下压内把手，斜舌和方舌同时收回。
 下压外把手只能收回斜舌。钥匙可同时收缩斜舌和方舌。



Specifications

Panic function
 Key action on latch bolt.
 Single throw dead bolt.
 Non-handed.
 Without strike plate.

In unlocked position

Latch bolt is operated from both sides by lever handle/key action.

In locked position

Inside lever handle retracts latch and dead bolt simultaneously;
 Outside lever handle retracts latch bolt only. Dead bolt operated by cylinder key.

72-65 PC

参数

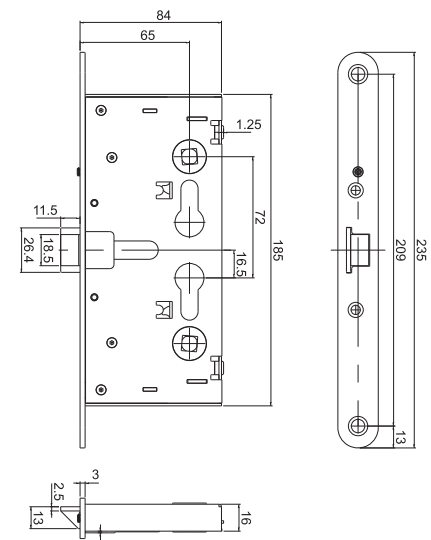
教室锁功能
 钥匙开启
 离合器拨轮
 不分左右门
 不配锁扣板

解锁状态

下压内、外把手盒钥匙都可以收回斜舌

上锁状态

下压内把手，斜舌收回。
 下压外把手空转。钥匙可同时收缩斜舌。



Specifications

Panic function
 Key action on latch bolt.
 Non-handed.
 Without strike plate.

In unlocked position

Latch bolt is operated from both sides by lever handle/key action.

In locked position

No operation of latch bolt from outside. Operation latch bolt from inside handle.

72-65 PA

参数

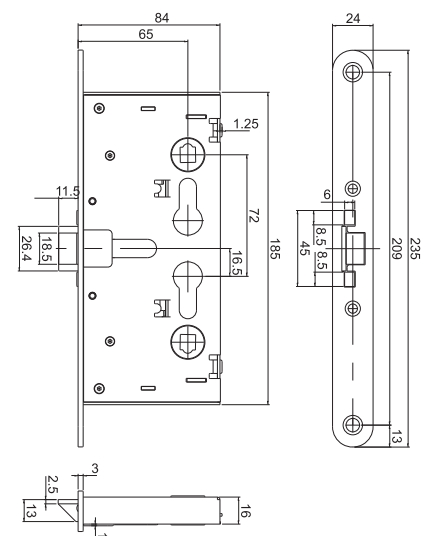
入户锁功能
 钥匙开启
 方舌一段式伸出
 不分左右门
 不配锁扣板

解锁状态

下压内、外把手盒钥匙都可以收回斜舌

上锁状态

下压内把手，斜舌收回，方舌不能收回。
 下压外把手只能收回斜舌。钥匙可同时收缩斜舌和方舌。



Specifications

Sash Lock
 Key action on latch bolt.
 Single throw dead bolt.
 Non-handed.
 Without strike plate.

In unlocked position

Latch bolt is operated from both sides by lever handle/key action.

In locked position

Inside and outside lever handle retracts latch only; Dead bolt operated by cylinder key.