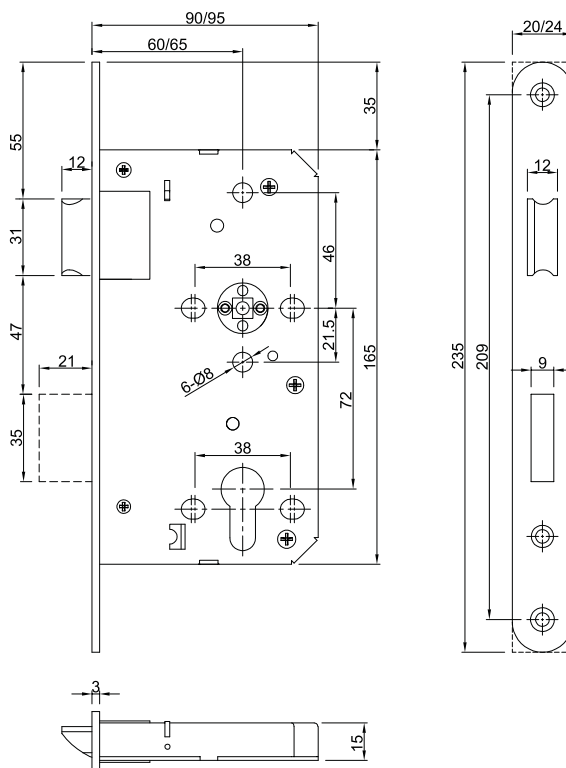


- 执行标准：欧盟EN12209:2016,20万次开启标准
EN1634-1:2012,4小时防火标准
EN179:2008,逃生标准
中国GB12955-2008,90分钟3C防火标准
- 舌头配置：SUS304不锈钢精铸斜舌、方舌
- 面板配置：高级耐指纹盖板，SUS304面板
- 拨轮配置：高精度钢制，一体式/分体式
- 表面处理：不锈钢拉丝，沙金PVD，亮金PVD，镜光
- 适用门型：木质门、钢质门、平口门、企口门等
- 方向开启：斜舌可换向，不分左右方向
- 适用区域：防火门、防烟门等
- Compliance:EN12209:2016+EN179:200,000 life cycle
EN1634-1:2012, 4 hours fire rated
- Dead bolt and latch bolt are made by casting stainless steel 304
- Forend is anti-fingerprint stainless steel 304
- Follower is casting stainless steel 304
- Finish: SS, satin PVD, polished PVD, polished
- Suitable for wooden and steel door , flat door, rebated door
- Non handed
- Application: fire door, smoke door

72-60T/72-65T

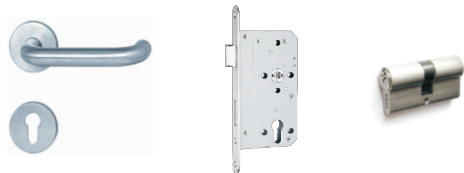
逃生防火锁体

Fire Rated Exit Lock



标准配置方案

Standard configuration



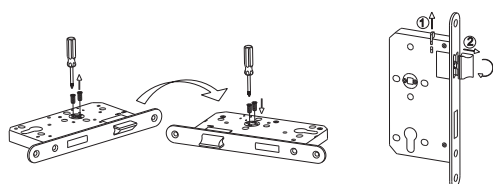
配置说明

The detail of standard configuration

- 把手配置：双面活动把手/单面活动，4颗对穿螺丝
- 锁体配置：钢木螺丝及标准100MM长8*8方杆
- 锁芯为单开或者双开，长度依据实际门厚确定
- 适用标准门厚45-50MM，选配门厚51-70MM
- Handle: Two activity handle for both side, 4 sets of through bolt .
- Lock: screws and 8*8*100mm spindle
- Cylinder: key/key or half cylinder
- Suitable for door thickness 45-50mm. 51-70mm thickness is optional.

换舌方向示意图

Reverse latch for left or right handed door .



功能说明

Function

- 逃生门：门内压把手开门，门外钥匙开门
- 钥匙可纳入总钥匙管理系统，实现统一管理
- Exit door : rotate the handle to open the door from inside, by key from outside
- Master key is available