

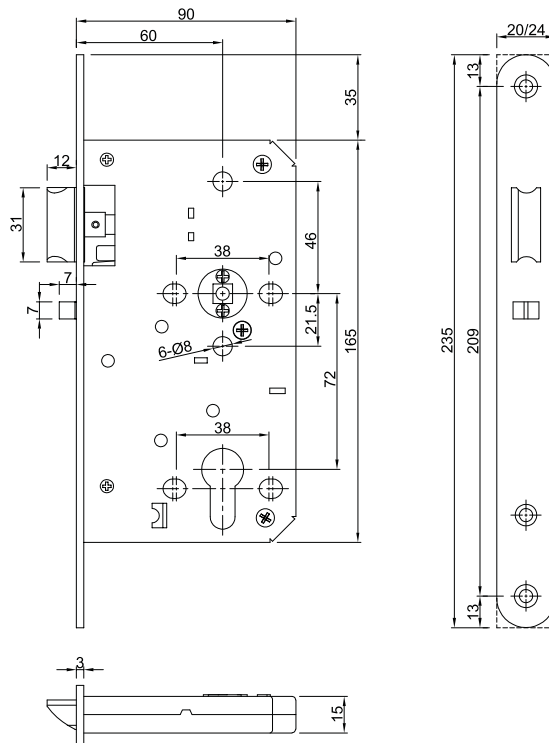
- 执行标准：欧盟EN12209:2016，20万次开启标准
EN1634-1:2012，4小时防火标准
EN179:2008，逃生标准
中国GB12955-200890分钟3C防火标准
- 舌头配置：SUS304精铸斜舌
- 面板配置：高级耐指纹盖板，SUS304面板
- 拨轮配置：高精度钢制，分体式
- 表面处理：不锈钢拉丝，沙金PVD等
- 适用门型：木质门、钢质门等
- 适用区域：教室门

- Compliance: EN12209:2016+ EN179, 200,000 life cycle
EN1634-1:2012, 4 hours fire rated
- Latch bolt are made by casting stainless steel 304, 4mm
- Forend is anti-fingerprint stainless steel 304
- Follower is casting stainless steel 304
- Finish: SS, Satin PVD, Polished PVD, Polished
- Suitable for woodend and steel door, flat door, rebated door
- Application: classdoor, office door, partition door

72-60C

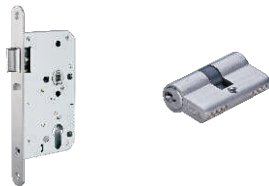
教室锁体

Classroom Lock



标准配置方案

Standard configuration



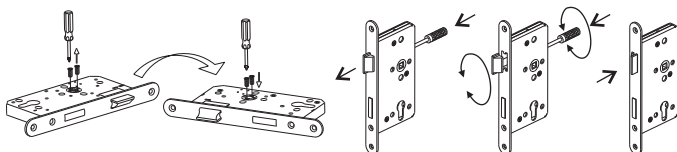
配置说明

The detail of standard configuration

- 把手配置：内外均为活动把手，款式可选；
- 锁体配置：钢木螺丝及标准100MM长8*8方杆
- 锁芯为单开或者双开，长度依据实际门厚确定
- 适用标准门厚45-50MM，选配门厚51-70MM
- Handle: Two activity handle for both side, 4 sets of through bolt .
- Lock: screws and 8*8*100mm spindle
- Cylinder: key/key or half cylinder
- Suitable for door thickness 45~50mm. 51~70mm thickness is optional.

换舌方向示意图

Reverse latch for left or right handed door .



功能说明

Function

- 教室门：上锁时，门内压把手，门外钥匙开门 开锁时，门内门外均压把手开门
- 钥匙可纳入总钥匙管理系统，实现统一管理
- Latchbolt retracted by lever from either side unless outside is locked by key. Unlocked from outside by key. Inside lever always free for immediate exit.
- Master key is available